

KMT Waterjet Cutting Pumps

STREAMLINE® SL-VI 60,000psi | 50HP

SL-VI s-Series
(Basic Model)

THE RIGHT SOLUTION FOR EVERY APPLICATION

The KMT STREAMLINE® SL-VI Series utilizes the latest technology and an innovative configurable design for ease of use, reliability and convenience---the result is a system that delivers the highest efficiency and profit.



SL-VI e-Series (Economical Model) includes HMI Control.

SL-VI i-Series (Fully Loaded Model)

Key Pump Features and Options Include:

Proven Technology STREAMLINE® SL-VI uses intensifier technology that has millions of operational usage hours

Modular Design Variety of choices to meet OEM and customer requirements

High Pressure Intensifiers 60,000psi redundant topworks*

Horsepower Selection 50HP

Top Cover Guard Interlock Design* Meets EN ISO13849-1 Safety Performance Standard PLa rating

Power Factor Correction Reduce electrical demand and operating costs

IE3 and NEMA Premium Motor Design Optimized motor efficiency, reduced electrical consumption

Siemens PLC Based Electrical Panel Universal design for global network support

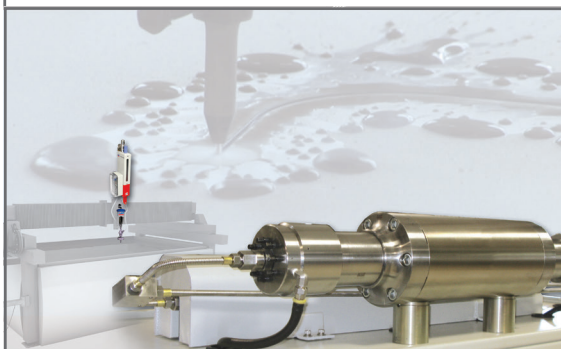
Redesigned Electrical Panel Separation of High Voltage & Low Voltage sections meet IEC/EN 60204-1 Standards



**INCREASED
ORIFICE SIZES
= INCREASED
PRODUCTIVITY
at 60,000psi**

SL-V 50HP	SL-VI 50HP
.013	.014

ORIFICE SIZE @ 50HP



The Right Pump Matters

*Optional



SPECIFICATIONS

DESCRIPTION	UNIT	50
Motor Rating	kW/HP	37 / 50
Pressure Range	PSI	60,000
Max. Flow Rate at Max. Pressure (60 Hz)	gal/min	1.00
Length	in	67.7
Width	in	45.6
Height	in	59.3
Cutting Water Circuit		
Intensification Ratio		20.21
Max. Stroke Rate	SPM	*59
Attenuator Volume	Liter	1
Cutting Water Inlet Pressure	PSI	35-100
Min. Cutting Water Inlet Flow	gal/min	4
Low Pressure Filter	µm abs.	10
Controls & Electric		
Nom. Current at 480V/60Hz	A	65
Pneumatic, Hydraulics & Cooling Circuit*		
Hydraulic Tank Capacity	gal	40
Oil Level and Temperature Control		Sensor
Standard Features		
Adjustable Booster Pump		•
Cutting Water Inlet Shut-Off Valve		•
Dual Pressure Setting		•
Oil Drip Pan		•
Dump Valve		•
Water Cooled Heat Exchanger		
Options		
Additional Liter of Attenuation		◦
Air Cooled Heat Exchanger		◦
Cover		◦
Doors		◦
Electric Panel & Cabinet		◦
High Pressure Transducer		◦
Motor Rewind for 575v & CSA		◦
Power Factor Correction		◦
Proportional Control		◦
Redundant Intensifier		◦
Soft Start/Electronic/Y-Delta		◦
USDA		◦

NOTE: Applies to all pumps:

Hydraulic Tank Capacity 40 gal
 Min. pneumatic air pressure 86 PSI
 Max. pneumatic air flow rate 1 SCFM
 Ambient temp. @ Oil-to-Water cooling circuit 41 - 106°F
 Ambient temp. @ Oil-to-Air cooling circuit 41 - 86°F

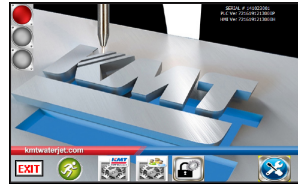
- Standard
- Option
- * Estimated



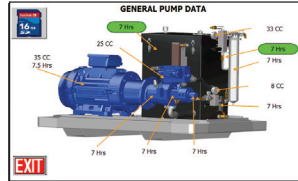
KMT Waterjet Systems Inc.

635 West 12th Street
 Baxter Springs, KS 66713 USA
 620-856-2151 • 800-826-9274
 Fax: 620-856-5050
 sales@kmtwaterjet.com

Siemens PLC Based Electrical Panel



The Home Screen displays the operating status of the machine and provides access to a series of setup and monitoring screens.

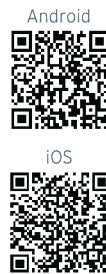


Harmonized PLC Platform NEW Touch screen is software updateable, offers 11 languages, optional gauges, and includes monitoring hours and cycle times for preventive maintenance. Standard systems offer Ethernet and USB Port with import/export capabilities.



NEW! Cut Calculator APP 2.0

Compare 90,000psi to 60,000psi cutting.
Increase Productivity @ 90,000psi!



THE HEART OF WATERJET CUTTING



kmtwaterjet.com

50 HP PUMPS -
 RELEASED 03/2022